

# DE-WATERING PUMPS

ASSEMBLED IN IRELAND



EUROPEAN QUALITY  
AS STANDARD



## DE-WATERING PUMPS



Model 2S5XHRB



Model 3S5XHRB

### 2" & 3" Engine Driven Self-Priming De-Watering Pumps

IPT Portable High Volume, Self-priming Centrifugal De-Watering Pumps come standard with a cast iron impeller to resist abrasion and one tool serviceability for easy cleanout. All pumps feature aluminium housing, cast iron wearparts, built-in check valve, suction strainer and heavy duty steel roll frame. Heavy duty cast iron flanges with male BSPT threads that rotates in 90° increments. Easy access fill plug on discharge port.

#### Features / Benefits

- Cast Aluminium with Cast Iron Wearparts
- Silicon Carbide/ Viton® Mechanical Seal
- EPDM/ EPR O-Rings Standard with Optional Viton®
- 2" or 3" Removable Male BSPT Suction and Discharge Ports
- Discharge Rotates in 90° Increments
- Easy Clean Out with One Tool Serviceability
- Engine Options: Honda
- Maximum Solids Handling up to 1-1/4"
- Maximum Flow up to 290 GPM
- Maximum Head up to 125 Ft.
- Self-Priming to 26 Ft.
- Wheel Kit Optional

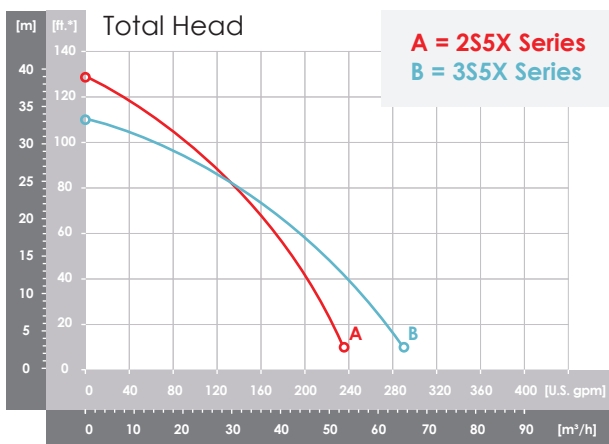


Available 24/7



for all your flood relief needs

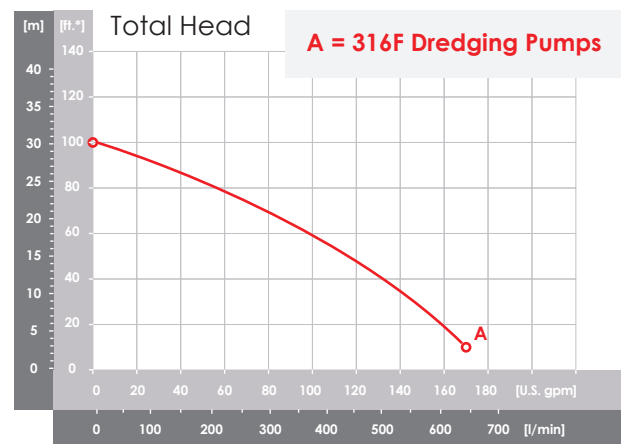
### PERFORMANCE OF ENGINE-DRIVEN SELF-PRIMING DE-WATERING PUMPS



(\*) Convert to PSI, divide by 2.31  
Liquid - Water specific gravity 1.0

Capacity

### PERFORMANCE OF ENGINE-DRIVEN DREDGING PUMP

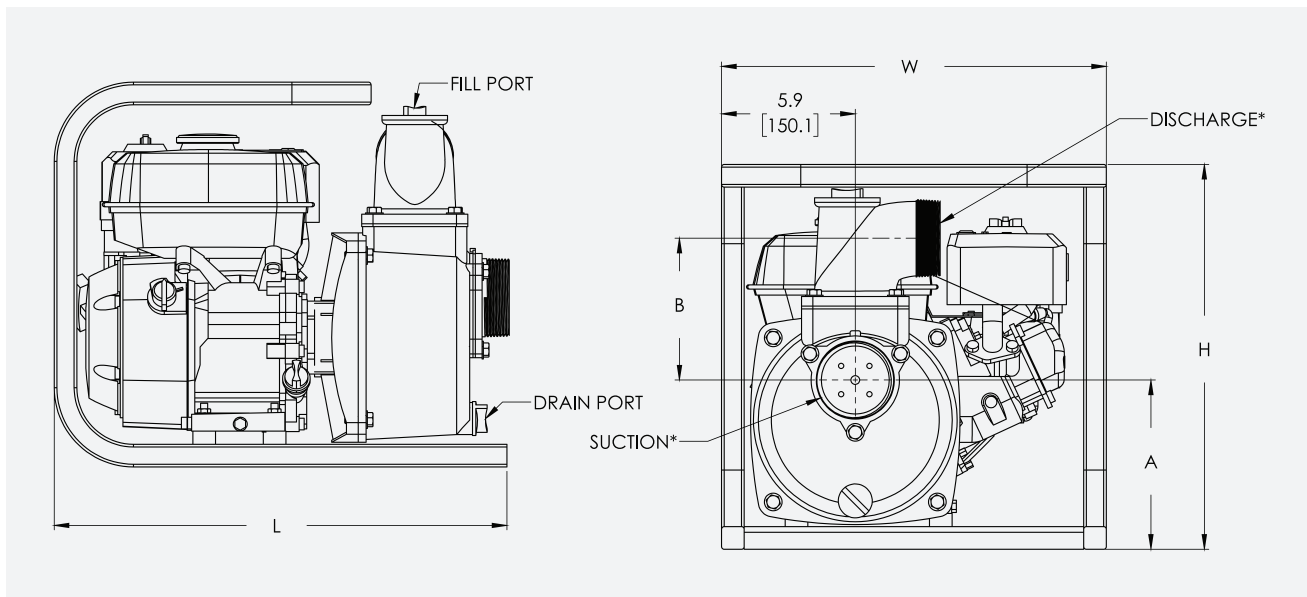


(\*) Convert to PSI, divide by 2.31  
Liquid - Water specific gravity 1.0

Capacity

## ENGINE DRIVEN

# SELF-PRIMING DE-WATERING PUMPS



## 2" DE-WATERING PUMPS

Model	HP Class	Curve	Port	Driver	Seal	Run Time (hours)	Tank Size (Gal/Ltr.)	Ship Wt. KG
2S5XARB	5 HP	A	2" BSPT	Honda*	Viton® / SIC-SI C	1.3	0.87/3.3	41
2S5XHRB	5 HP	A	2" BSPT	Honda*	Viton® / SIC-SI C	2.0	0.82/3.1	41
2S5XZRB	5 HP	A	2" BSPT	Honda*	Viton® / SIC-SI C	2.7	0.79/3.0	52

Construction: Cast Aluminium  
with Cast Iron Components

Maximum Solids Handling  
Capacity: 1" Diameter

(\*) HP Class represents market category and is  
not intended to define actual horsepower.

## 3" DE-WATERING PUMPS

Model	HP Class	Curve	Port	Driver	Seal	Run Time (hours)	Tank Size (Gal/Ltr.)	Ship Wt. KG
3S5XARB	5 HP	B	3" BSPT	Honda*	Viton® / SIC-SI C	1.3	0.87/3.3	45
3S5XHRB	5 HP	B	3" BSPT	Honda*	Viton® / SIC-SI C	2.0	0.82/3.1	45
3S5XZRB	5 HP	B	3" BSPT	Honda*	Viton® / SIC-SI C	2.7	0.79/3.0	54

Construction: Cast Aluminium  
with Cast Iron Components

Maximum Solids Handling  
Capacity: 1 1/4" Diameter

\*Oil Alert  
Included

(\*) HP Class represents market category and is  
not intended to define actual horsepower.

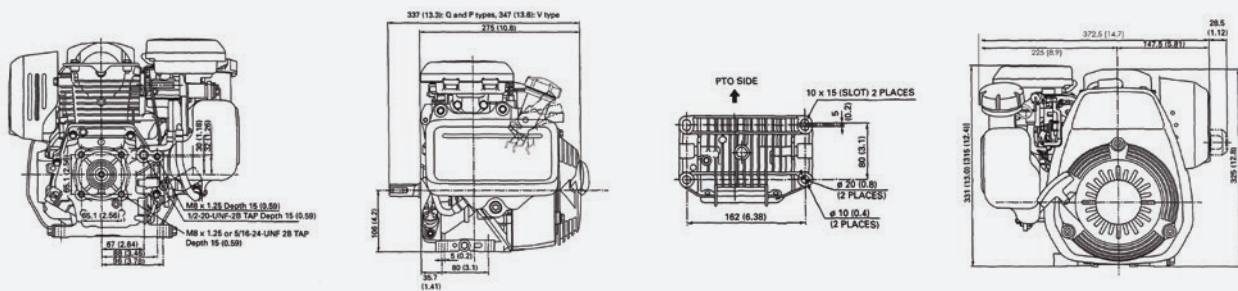


## Standard Features

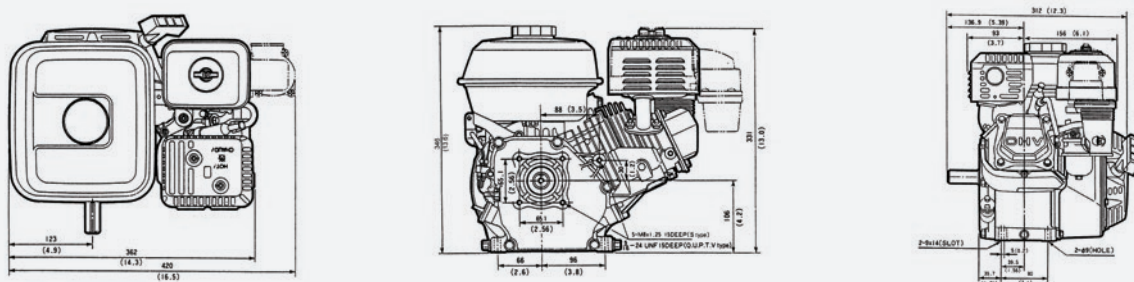
- Cast Iron Impeller
- One Tool Serviceability Tool Included with Engine Driven Models
- Silicon Carbide Mechanical Seal with Graphite Impregnated Seat and Viton® Elastomers
- Heavy Duty Steel Roll Frame and Strainer Included
- Built-in EPDM/EPR Check Valve
- Removable / Replaceable Cast Iron Suction / Discharge Ports
- Discharge Port Rotates in 90° Increments
- Honda Engine
- Vibration Dampening Feet
- Maximum Temperature 180°F
- Optional Viton® O-ring/ Check Valve Available
- Pedestal Version Available
- Optional Wheel Kit Available
- QSP – Quick Ship Pumps for Many Models

## Specifications

### GC160



### GX160



Model	G200F
Engine	Single cylinder, 4 stroke, OHV, forced air cooled
Net Power	5.5 hp / 4.1 kW @ 3600 rpm
Gross Power	6.5 hp / 4.85 kW @ 3600 rpm
Maximum Torque	12.4 Nm @ 2500 rpm
Starting System	Recoil Start (electric option)
Ignition System	Transistor Electric, Inductive firing
Displacement	196 cc
Fuel Consumption	≤ 395 g/kW h

Fuel Tank Capacity	3.61 litres
Oil Capacity	0.6 litres
Noise Level	(≤ 7m) 70 db (A)
Continuing Operation Hours	2.95
Bore x Stroke	68 mm x 54 mm
Compression Ratio	8.5 :1
Lubrication System	Splash
Air Cleaner	Semi-dry, oil bath, foam filter
Dimension (L x W x H)	376 mm x 312 mm x 335 mm
Dry Weight	16 kg



---

### **Patterson Pump Ireland Ltd.**

Unit 1 IDA Ardmore Business & Technology Park  
Marlinstown N91 R762  
Mullingar, Co. Westmeath, Ireland

[sales@ie.pattersonpumps.com](mailto:sales@ie.pattersonpumps.com)

+353 44 934 7078

### **Patterson Pump Company**

2129 Ayersville Road  
Toccoa, GA 30577, USA

[sales@ie.pattersonpumps.com](mailto:sales@ie.pattersonpumps.com)