

# PRE-PAC® SYSTEM FIRE PUMPS MANUFACTURED IN IRELAND

*The Pump People®*  
**Patterson**  
PUMP IRELAND LIMITED  
A Subsidiary of Patterson Pump Company USA



## LESS COST IN LESS SPACE

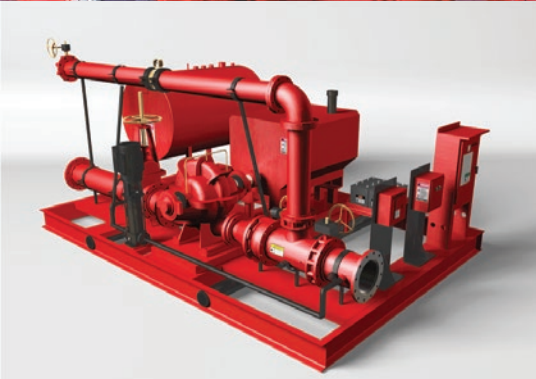
Fire Pumps | Clean & Waste Water Pumps | HVAC Pumps | Pre-Housed Pumps



## PRE-HOUSED FIRE PUMP

# PRE-PAC® SYSTEM

The Pre-Pac® system significantly reduces on-site labour time, engineering and installation time and the associated costs. The prefabricated pump house structure and pre-engineered pumping system saves time and money for our customers.



The Pre-Pac® system arrives on-site in a fully enclosed ready for use pumphouse.

After the pump house is mounted on its foundation, mains water and electricity connections are all that is needed before the pumping system is fully operational.

The Pre-Pac® can be fully enclosed on a skid/base mounted package.

This system can include any of our award-winning fire pump range in a fully self-contained unit.

All sensing lines, piping, fittings, electric or diesel drives and controls are fully tested to meet European and International standards of operation.

Coronavirus  
COVID-19



The Pre-Pac® pump house is a cost effective and efficient way of meeting your pumping needs while also facilitating important social distancing guidelines. This system can also help our customers in their efforts to maintain social distancing measures on their project sites. The Pre-Pac® system eliminates the need for teams of construction workers and electricians on your job site.

## Whole structure covered by Patterson's 2 year warranty

As with all our products, Patterson Pump Ireland offers its engineers and sales team for after sales service and care so our customers are in no doubt that we will always go the extra mile to ensure their needs are met.

The pump house can be built in accordance with various European and global standards of operation.

The Patterson Pump House utilises a unique construction method. It features channel frame wall construction over an internal self-supporting galvanised structural steel framework.

The Pump House walls and roof include thermal breaks for increased energy efficiency.

Exterior and interior colours can be specified for the building from our standard shade card.

The internal layout of the pumping system can be specified by the customer depending on their individual needs.



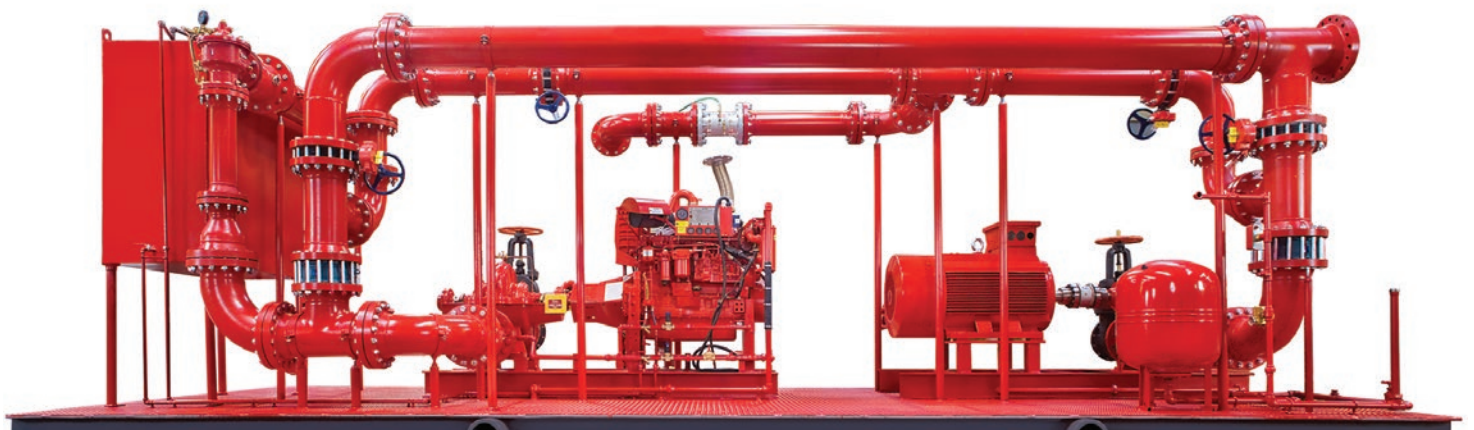
The Pre-Pac® pump house and system is manufactured in its entirety at our Mullingar based ISO9001 accredited facility. Our fire pumps are engineered to meet or exceed all applicable codes and certifications, including ISO, UL, FM, NFPA, LPCB, CNBOP and EN12845.





Patterson Ireland can offer a market leading warranty that covers the entire structure and pumping system.



The Pre-Pac® pump house is a cost effective and efficient way of meeting your pumping needs.



 Patterson Pump Ireland, HQ  
 Distributors



## **PATTERSON PUMP DISTRIBUTORS**



### **Patterson Pump Ireland Ltd.**

Unit 1 IDA Ardmore Business & Technology Park,  
 Marlinstown,  
 Mullingar, Co. Westmeath, Ireland  
 N91 R762

[sales@ie.pattersonpumps.com](mailto:sales@ie.pattersonpumps.com)  
 +353 44 934 7078

 [company/patterson-pump-ireland-ltd](https://www.linkedin.com/company/patterson-pump-ireland-ltd)

### **Patterson Pump Company**

Toccoa, Georgia, USA  
[sales@pattersonpumps.com](mailto:sales@pattersonpumps.com)

### **Patterson Pump Company Middle East**

Athens, Greece  
[pattpump@otenet.gr](mailto:pattpump@otenet.gr)

### **Patterson Pump Company Far East**

Singapore  
[chlow@pattersonsingapore.com](mailto:chlow@pattersonsingapore.com)

### **Patterson Mexico**

Querotero, Mexico  
[mtrejo@pattersonpumps-mexico.com](mailto:mtrejo@pattersonpumps-mexico.com)

### **Patterson Latin America**

San Jose, Costa Rica  
[rodolfo.zeledon@pattersonpumps-latam.com](mailto:rodolfo.zeledon@pattersonpumps-latam.com)